

# Xerox® DocuMate® 700

## The Ultimate Flexible Scanning Solution for Large Documents

- A3 (11" x 17") USB Flatbed Scanner
- Versatile flatbed option for sheetfed scanner or direct connect to PC
- Kofax® VRS™ delivers perfect scans from imperfect originals
- 9 Visioneer OneTouch® pre-programmed 'scan-to' destinations
- Hi-speed USB 2.0 interface (USB 1.1 compatible)

### Xerox DocuMate 700

The Xerox® DocuMate® 700 is an A3 flatbed scanner with a built-in USB hub which enables it to be connected directly to a PC and a DocuMate ADF scanner to provide additional flatbed capability. 'Daisy-chaining' the scanners to a PC, brings total flexibility to the complete DocuMate scanner range. In order to complement existing ADF scanners, the Xerox DocuMate 700 has been designed specifically for departmental or production scanning environments, offering the opportunity to undertake a wider variety of scanning tasks.

### Powerful Technology

The DocuMate 700 can scan documents to 9 preset, yet completely configurable, destinations using Visioneer® OneTouch® technology. This enables your documents to be scanned with the correct settings for resolution, color, cropping, file format and then delivered to virtually any application, folder or

device – all at the touch of a button! Imagine the workflow possibilities of delivering perfectly scanned documents to email, Xerox DocuShare or a custom web application for your enterprise. OneTouch technology is not only a great productivity gain, but it greatly reduces the training requirements for scanner users and increases your return on investment.

### Total Flexibility

The DocuMate 700's powerful software, robust functionality and hardware specification deliver the speed and quality that is required for production and departmental scanning, providing the opportunity to do more in your scanning environment than ever before. Flatbed scanning offers the option to scan a wide variety of documents, such as books, magazines, plastic cards and fragile paper. Now there is no need to install numerous flatbed scanners across a network if the majority of users do not require this function on a frequent basis. You now have a new option to simply add flatbed capability to your existing set-up, saving you time and money. The generous flatbed size enables you to scan large documents up to A3 (11 x 17") size, even if the connected desktop scanners are only A4 (8 1/2 x 11", US Letter) size .



# Xerox® DocuMate® 700

## Visioneer® OneTouch®



Visioneer OneTouch is an easy to use utility that connects the buttons on the DocuMate scanner with a powerful set of scanner settings that greatly improve the efficiency of your workflow – so that with one touch, a document is scanned automatically to email, Word, your printer, or simply a file folder.

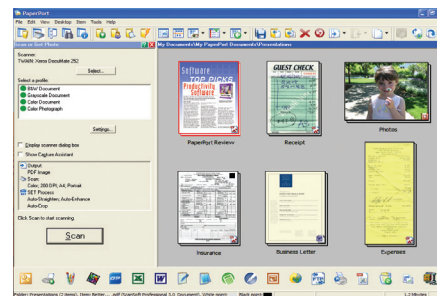
In addition to scanning directly to all popular destinations, Visioneer OneTouch also links the DocuMate scanner with industry-leading document management software such as, Xerox DocuShare®, Microsoft® SharePoint® & DocuWare® – forming an easy to use workflow from paper to a selected destination. A Software Development Kit (SDK) is also available which provides the ability to develop custom

links and integrate them into the Visioneer OneTouch control panel quickly and easily.

### Kofax® VRS™ technology

Kofax VRS is an award winning patented technology that automatically ensures the best possible image quality and OCR accuracy for scanned document images. As pages pass through the scanner, VRS performs a multipoint inspection of each document, instantly checking and adjusting alignment (skew), brightness, contrast and image clarity.

### Nuance® PaperPort®



PaperPort is the easiest way to turn volumes of paper into organized digital files that you can quickly find, use and share. Stop wasting time looking for paper documents scattered around your office, the Xerox DocuMate 700 can scan documents directly to PDF files.

PaperPort supports one-click creation of PDF files from Microsoft Office documents and supports Print-to-PDF using other Microsoft Windows® applications. A wide range of image formats can also be converted into PDF – including TIFF, MAX, JPG, BMP and GIF.

Scan to network drives by adding new destinations to the PaperPort® folder list allows scanning direct to the desired location. Scan straight to your My Documents folder or to a network drive.

### Nuance OmniPage Pro

Provides a precise OCR and layout retention solution, quickly turning scanned documents into editable, formatted text. The text can then be used in virtually any word processing, desktop publishing or web publishing program.

### Text Searchable PDF

Transform volumes of paper or photos into organized digital files that can be quickly found, used and shared. In searchable PDF format, the user can instantly search documents for keywords or phrases. This provides additional archival benefits beyond traditional storage, and the widely accepted PDF format lets everyone view and print documents – on any computer.

Xerox® DocuMate 700 Product Specifications			
Model Number	XDM7005D-WU		
Scan Speeds: @ 200 dpi	Black & White	Grayscale	Color
– A4 size (8.5" x 11")	2.8 sec/page	2.6 sec/page	3.9 sec/page
– A3 size (11" x 17")	3.5 sec/page	3.5 sec/page	5.7 sec/page
Optical Resolution	600 dpi		
Output Bit Depth	24-bit color, 8-bit grayscale, 1-bit black & white		
Scan Method	CCD		
Control Method	2 Buttons		
Interface	Hi-Speed USB 2.0 (USB 1.1 compatible)		
Dimensions (WxDxH)	23.3" x 17.1" x 5.3"		
Weight	16.75 lbs.		
Light Source	Cold Cathode Fluorescent Lamp (CCFL)		
Sensor	Image Charge Coupled Device (CCD)		
Duty Cycle	3,000 pages/day		
Warranty	1 Year		

For more information about the Xerox line of scanners, visit [www.xeroxscanners.com](http://www.xeroxscanners.com)



©2011 Xerox Corporation. All rights reserved. XEROX®, XEROX and Design®, DocuMate® and DocuShare® are trademarks of, or licensed to Xerox Corporation in the United States and/or other countries. Visioneer and OneTouch® are trademarks of Visioneer, Inc. Kofax®, VirtualReScan® and VRS™ are trademarks of Kofax, Inc. Nuance® and OmniPage® are trademarks of Nuance Communications, Inc. or its affiliates in the United States and/or other countries. Microsoft®, SharePoint®, Windows Vista®, Windows®, the Windows logo and XP® are trademarks of Microsoft Corporation in the United States and/or other countries. Intel® and Pentium® are trademarks of Intel Corporation in the U.S. and/or other countries. Universal Serial Bus is a trademark of USB Implementers Forum, Inc. (USB-IF). TWAIN™ is a trademark of TWAIN Working Group. EMC®, Captiva®, ISIS® and QuickScan™ are trademarks of EMC Corporation. All other trademarks are the property of their respective owners and are hereby acknowledged. Prices, features, specifications, capabilities, appearance and availability of Xerox products and services are subject to change without notice. 11/11

### Minimum System Requirements

- Pentium® IV or equivalent processor
- Windows® 7 / Vista® / XP®
- 2 GB RAM
- 500 MB available hard drive space
- DVD-ROM drive
- USB 2.0 port

### Contents

- DocuMate 700 Scanner
- Power Supply
- USB 2.0 Cable
- Quick Install Card
- Technical Support Card
- DVD-ROM including:
  - User's Manual
  - Visioneer OneTouch
  - Nuance PaperPort
  - Nuance OmniPage Pro
  - Kofax VRS
  - Scanner Drivers (TWAIN, ISIS and WIA Driver)

