



KONICA MINOLTA

## magicolor 4690MF

DO BUSINESS BETTER



- \_ FULL COLOR
- \_ PRINTER
- \_ COPIER
- \_ SCANNER
- \_ FAX



### MULTIPLE FUNCTIONS—ONE ADDRESS

Save time, space, and money with the magicolor® 4690MF color laser all-in-one. This compact multitasker features professional-quality printing and copying at 25 ppm color and b&w. It also boasts enhanced scanning and 33.6 Kbps Super G3 fax functionality. Yet, its space-saving design easily fits into any size workspace. And this quiet workhorse won't disturb your office. Even while delivering bold two-sided prints the magicolor 4690MF keeps noise levels at a minimum so you can carry on business as usual. Time saving print/copy/scan/fax options and user friendly design make the magicolor 4690MF the perfect complement to any productive work environment.

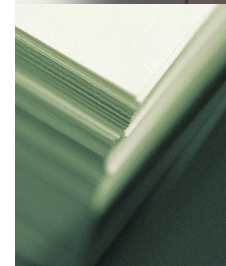
The essentials of imaging

## magicolor 4690MF

- ▶ ULTRA FAST 25 PPM PRINT AND COPY SPEED—COLOR AND B&W
- ▶ UP TO 120,000 PRINT-PER-MONTH DUTY CYCLE
- ▶ VIVID 2400 X 600 DPI-CLASS PRINT QUALITY
- ▶ AMAZING COLOR WITH SIMITRI® HD POLYMERIZED TONER
- ▶ SCAN TO EMAIL, SMB, FTP OR USB; NETWORK TWAIN
- ▶ 33.6 KBPS SUPER G3 FAX CAPABILITY
- ▶ 50-SHEET REVERSING AUTO DOCUMENT FEEDER FOR MULTI-PAGE COPIES & SCANS
- ▶ BUILT-IN AUTOMATIC DUPLEXER AND REVERSING AUTOMATIC DOCUMENT FEEDER FOR TWO-SIDED PRINTS, COPIES AND SCANS
- ▶ LOWER HEIGHT FOR INCREASED ACCESSIBILITY
- ▶ 850-SHEET MAX. PAPER CAPACITY WITH 500-SHEET OPTIONAL TRAY
- ▶ PAGESCOPE® UTILITIES FOR ADVANCED PRINTER MANAGEMENT



DO BUSINESS BETTER



**LOW ACOUSTIC LEVELS.** THE MAGICOLOR 4690MF WON'T DISTURB YOUR WORKSPACE. EVEN WHILE DUPLEXING, THIS QUIET WORKHORSE HAS THE LOWEST ACOUSTIC LEVEL IN ITS CLASS.

### COMPACT MULTITASKER

**Full function all-in-one.** The magicolor 4690MF prints, copies, faxes, even scans from one location. A one-product solution for your organization's essential business functions means less time and money spent maintaining separate machines and more time focusing on the important tasks at hand.

**Versatile office assistant.** The magicolor 4690MF easily satisfies the demands of a busy office by effortlessly transitioning between print, copy, scan or fax modes for flawless results.

### PRODUCTIVITY CENTER

**Quick, quality color.** Create bold prints, detailed scans and crisp faxes with the touch of a button. The magicolor 4690MF delivers prints and copies at 25 ppm—color and b&w. And with enhanced scanning and intuitive faxing features this streamlined workhorse will deliver high-quality results from the first page to the last.

**Economical and time saving.** The magicolor 4690MF comes equipped with an internal automatic duplexer and a 50-sheet reversing automatic document feeder. Two-sided printing delivers economical, high impact documents while a built-in RADF means less micro-managing and more productivity.

**ENHANCED SCANNING.** BY USING THE ADF OR FLATBED USERS CAN SCAN DOCUMENTS UP TO 8.5" X 14" DIRECTLY TO EMAIL, FTP, USB OR SMB.



**QUICK POWER SAVE RECOVERY.** THE ALWAYS READY MAGICOLOR 4690MF WILL NEVER KEEP YOU WAITING, WITH A RETURN TIME FROM POWER SAVE MODE OF 50 SECONDS.

**25 PPM** **25 PPM**

## FEATURES, OPTIONS & BENEFITS

**Consolidate your office essentials.** With a height of only 22.76 inches, the magicolor 4690MF seamlessly fits into any work environment. By combining four essential business functions—print, copy, scan and fax—into one compact solution, the space-saving magicolor 4690MF is also a cost-effective solution for today's busy professionals.

**Quick and convenient copies.** Equipped with a 50-sheet reversing automatic document feeder, the magicolor 4690MF provides timesaving, unattended copying. And the automatic duplexer allows users to make 2-sided copies from 1-sided originals at the click of a button. Users can also adjust lightness, density and resolution from the intuitive control panel for complete customization.

**Scanning made easy.** Scan in detailed 600 x 600 dpi quality directly to Email, SMB, FTP, and USB as JPEG, PDF, TIFF files with TWAIN and WIA compatibility. For added convenience, scan any document up to 8.5" x 14" from the flatbed glass or automatic document feeder. Choose text, photo, or combination to customize your scanned image for attention-demanding digital documents.

**High-speed fax capabilities.** The magicolor 4690MF stand-alone 33.6 Kbps Super G3 fax includes 220 speed dials, 20 group dials and up to 6 MB of fax memory. It also is equipped with an internal address book that can be accessed from the control panel for quick number retrieval.

**Do not disturb design.** The magicolor 4690MF features a low acoustic noise so it is perfectly at home on desktop or in a shared workspace. Even while delivering eye-catching, colorful copies and prints at 25 ppm color and b&w, this multitasker remains quiet while delivering high throughput.

**User-friendly all-in-one.** The magicolor 4690MF was designed with the user in mind. From preinstalled, ready-to-use supplies to an intuitive control panel, this all-in-one features effortless operation. Compatibility with all major operating systems, plus 10/100 Base T, USB 2.0 and USB 1.1 connectivity ensure you'll be up and running in no time.



**CONSISTENT, BRILLIANT RESULTS.** IMPRESSIVE SPECS INCLUDING HIGH RESOLUTION AND A ROBUST DUTY CYCLE OF 120,000 PRINTS PER MONTH ENSURE PROFESSIONAL-QUALITY OUTPUT EVERY TIME.

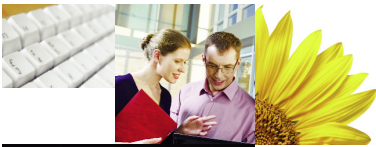
**AUTOMATIC, UNATTENDED PRODUCTION.** A 50-SHEET REVERSING AUTOMATIC DOCUMENT FEEDER AND BUILT-IN DUPLER SAVE USERS TIME AND PAPER. AN OPTIONAL 500-SHEET CASSETTE INCREASES THE MAX PAPER INPUT TO 850-SHEETS FOR FEWER REFILLS.



**EASY TO USE CONTROL PANEL**  
A 20 CHARACTER BY 4 LINE DISPLAY IS EASY TO SEE AND USE. AN INTUITIVE MENU SYSTEM PLUS A SIMPLE HARD KEY LAYOUT MAKES LEARNING ALL THE FUNCTIONS OF THIS AIO EFFORTLESS.



**magicolor**



# magicolor 4690MF

## GENERAL SPECIFICATIONS

### PRINT

**PRINT METHOD:**  
Electrophotographic Laser

### PRINT SPEED\*:

Color: 25 ppm  
Monochrome: 25 ppm  
\*Exact print speed differs depending on system configuration, software application, driver and document complexity.

### WARM-UP TIME:

50 seconds (sleep mode to ready)

### FIRST-PAGE OUTPUT TIME:

Color: 18 seconds  
Monochrome: 18 seconds

### RESOLUTION:

2400 x 600, 1200 x 600, 600 x 600 dpi

### RECOMMENDED MONTHLY DUTY CYCLE:

120,000 prints

### COPY

**COPY SPEED:**  
Color: 25 cpm  
Monochrome: 25 cpm

### FIRST-PAGE OUTPUT TIME:

Color: 28 seconds  
Monochrome: 25 seconds

### RESOLUTION:

600 x 600, 600 x 300 dpi

### COPY SETTINGS:

Density (7 Steps)  
Reduce/Enlarge (25 - 400%)  
Collate, Number of copies (1-99)  
Quality (Text/Photo/Mix, Normal/Fine)  
Duplex, 2-in-1, 4-in-1, ID card copy,  
Poster copy, Clone copy

### AUTOMATIC DOCUMENT FEEDER:

50 sheets, up to 8.5" x 14"

### SCAN\*

**SCANNER TYPE:**  
Flatbed  
Automatic Document Feeder

### SCAN SPEED:

300 dpi: approx. 2 sec/pg  
600 dpi: approx. 4 sec/pg

### RESOLUTION:

600 x 600, 600 x 300 dpi

### COLOR DEPTH:

24 bit

### SCAN BED (PLATEN) SIZE:

Up to 8.5" x 14"

### SCAN DESTINATION:

Scan to Email (Ethernet), FTP, SMB, USB

### SCAN DRIVERS:

TWAIN and WIA (Windows only)

### SCAN UTILITIES:

LinkMagic (Windows only), PageScope  
Workware™ (optional)

### AUTOMATIC DOCUMENT FEEDER:

50 sheets, up to 8.5" x 14" (216 x 356 mm)

### \*Notice for U.S.A.:

This product may contain mercury in the lamp used in the scanning unit. Please dispose of it according to local, state, or federal laws.

### PC FAX

Send and receive digital faxes  
(PC fax modem required)

### FAX

**FAX SPEED:**  
33.6 Kbps Super G3

### FAX RESOLUTION:

Standard (203 x 98 dpi)  
Fine (203 x 196 dpi)  
Super Fine (203 x 392 dpi)

### FAX MEMORY:

6 MB

### COMPRESSION:

MH/MR/MMR/JBIG

### AUTO REDUCTION:

Yes

### DIALING:

Speed Dials: 220  
Group Dial: 20 groups; 50 stations/group  
Broadcast: 255 stations

### HARDWARE AND SOFTWARE CAPABILITIES

#### PROCESSOR:

200 MHz

#### MEMORY:

256 MB DDR SDRAM on board

#### OPERATING SYSTEM COMPATIBILITY:

Windows™ Vista  
Windows Server 2003  
Windows XP  
Windows 2000  
Macintosh OS X (10.2+)

#### PRINTER MANAGEMENT:

PageScope Net Care  
PageScope Web Connection  
PageScope Network Setup

#### COLOR SUPPORT:

Enhanced Automatic Image Density Control  
(eAIDC)

#### HOST SYSTEM REQUIREMENTS

**WINDOWS**  
400 MHz Pentium II with 128 MB RAM  
256 MB free disk space  
CD-ROM/DVD drive

#### MACINTOSH

Power PC G3 with 128 MB RAM  
256 MB free disk space  
CD-ROM/DVD drive

#### INTERFACE SUPPORT

Ethernet (10/100BaseTX)  
USB 2.0  
USB 1.1 Host Port

#### ETHERNET PROTOCOLS

TCP/IP, EtherTalk, IPX/SPX, UDP, IPP v1.1,  
SNMP, HTTP/HTTPS, WSD

#### PAPER HANDLING

**STANDARD PAPER INPUT:**  
250-sheet cassette  
100-sheet multipurpose tray

#### OPTIONAL PAPER INPUT:

500-sheet lower feeder

#### STANDARD PAPER OUTPUT:

250-sheet face-down output tray

#### AUTOMATIC DUPLEXER:

For two-sided printing

### PAPER SIZES SUPPORTED:

100-sheet multipurpose tray:  
Letter  
Legal  
4" x 6"  
16K  
Executive  
Folio  
Govt. Letter  
Govt. Legal  
Kai 16, 32  
Officio  
UK Quarto  
SP Folio  
Statement  
YOUKEI 6  
A4, A5, A6  
B5, B6  
Custom Sizes:  
(W) 3.2"-8.5" to (L) 5.8"-14"  
(W) 92-216 mm to (L) 148-356 mm  
Envelopes:  
Monarch, Com 10, DL, B5 (ISO), C6,  
Choukei #3  
Postcards:  
Double, Japanese

### 250-sheet lower feeder unit:

Letter  
4"x6"  
16K  
Executive  
Kai 16, 32  
Govt. Letter  
UK Quarto  
Statement  
Custom Sizes:  
(W) 3.2" - 8.5" to (L) 5.8" - 11.69"  
(W) 92-216 mm to (L) 148-297 mm  
A4, A5, A6  
B5, B6

### 500-sheet optional lower feeder unit:

Letter  
Legal  
Executive  
Govt. Legal  
A4  
B5

### Duplexer:

Letter  
Legal  
16K  
Executive  
Folio  
Govt. Letter  
Govt. Legal  
Kai 16  
Officio  
SP Folio  
A4  
B5  
Custom Sizes:  
(W) 7.17" - 8.5" to (L) 10.12" - 11.69"  
(W) 182-216 mm to (L) 257-297 mm

### PRINTABLE AREA:

0.157" (4 mm) from all edges  
8.19" (208 mm) maximum print width  
13.7" (348 mm) maximum print length

### PAPER WEIGHTS:

Plain Paper: 16-24 lb. Bond (60-90 g/m<sup>2</sup>)

Thick Stock: 24-110 lb. Index (90-210 g/m<sup>2</sup>) via

multipurpose Tray only

Automatic Document Feeder:

Simplex: Up to 34 lb. Bond (35-128 g/m<sup>2</sup>)

Duplex: Up to 34 lb. Bond (50-128 g/m<sup>2</sup>)

Duplex: 16-24 lb. Bond (60-90 g/m<sup>2</sup>)

### PRINT MEDIA:

Plain Paper  
Recycled Paper  
Letterhead  
Thick Stock  
Glossy Stock  
Transparencies  
Laser Quality Labels  
Envelopes  
Postcards

### PHYSICAL

#### TYPE:

Tandem Full Color AIO

#### DIMENSIONS (WXDXH):

21.22" x 23.23" x 22.76"  
(539 x 590 x 578 mm)

#### WEIGHT:

121 lbs. (55 kg) - w/ consumables

### ELECTRICAL

#### POWER REQUIREMENTS:

100 VAC, 50/60 Hz  
120 VAC, 50/60 Hz  
220-240 VAC, 50/60 Hz

#### POWER CONSUMPTION:

Average: 650 Watts  
Maximum: 1,250 Watts Max.  
Standby: 200 Watts Avg.  
Low Power Mode: 140 Watts or less  
Energy Saver: 25 Watts or less

#### ENERGY STAR COMPLIANT\*:

28W or less

\*The addition of some options, in some combinations, may cause the product to become non-compliant.

### ENVIRONMENTAL

#### TEMPERATURE REQUIREMENTS:

Operating: 50° to 95° F (10° to 35° C)

#### HUMIDITY:

Operating: 15% to 85% RH

#### NOISE LEVELS:

Printing: <53.5 dB  
Standby: <39 dB  
Copying: <54.5 dB

#### REGULATORY/SAFETY CONFORMITY:

UL, cUL, CSA, FCC-B, CDRH

#### CONSUMABLES\*:

In-Box Toner: Cyan, Magenta, Yellow, Black  
(yield up to 3,000 pages @ 5% coverage)  
Replacement Toner: Cyan, Magenta, Yellow,  
Black (yield up to 4,000 or 8,000 pages  
@ 5% coverage)  
Imaging Unit: Cyan, Magenta, Yellow, Black  
(yield up to 30,000 pages @ 5% coverage)  
Waste Toner Box

\*The stated life expectancy of each consumable is based on printing under specific operating conditions such as page coverage for a particular page size (5% coverage of letter/A4). The actual consumable's life will vary depending on the use and other printing variables including page coverage, page size, media type, continuous or intermittent printing, and ambient temperature and humidity.

#### WARRANTY:

One-year on-site

magicolor



© 2008 KONICA MINOLTA BUSINESS SOLUTIONS U.S.A., INC. All rights reserved. Reproduction in whole or in part without written permission is prohibited. Konica Minolta and The essentials of imaging are trademarks of KONICA MINOLTA HOLDINGS, INC. magicolor and PageScope are registered trademarks of KONICA MINOLTA BUSINESS TECHNOLOGIES, INC. Simitri is a registered trademark of KONICA MINOLTA BUSINESS SOLUTIONS U.S.A., INC. All other brands and product names are registered trademarks or trademarks of their respective owners.

Design and specifications are subject to change without notice.



KONICA MINOLTA

KONICA MINOLTA  
BUSINESS SOLUTIONS U.S.A., INC.

100 Williams Drive  
Ramsey, NJ 07446

[www.kmbs.konicaminolta.us](http://www.kmbs.konicaminolta.us)  
[www.kmbs.konicaminolta.us/solutions](http://www.kmbs.konicaminolta.us/solutions)

Item #: 4690MFBRO  
07/08